

February 2007

INSTALLATION, OPERATION & MAINTENANCE INSTRUCTIONS

MODEL NO. 70660

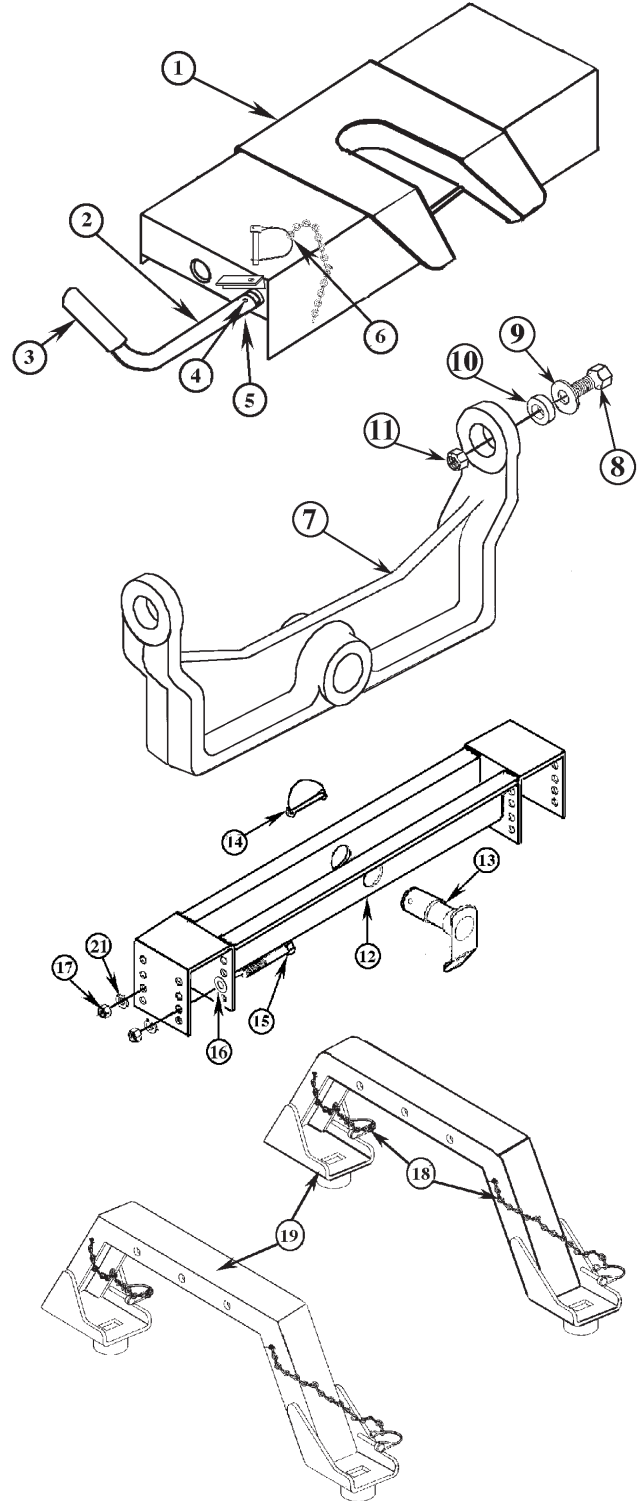
Please be sure that this document is given to the end user of this product.
This contains many important items relating to the proper usage of this product.

IMPORTANT NOTICE

This is an RV 5th wheel hitch. Use of this hitch for COMMERCIAL trailer towing will limit the hitches warranty to 1 year

COMPLETE PARTS LIST

Part	Description	Quantity
1.	3884-03 Head Assembly With Yoke	(1)
2.	2648-05 Handle Assembly	(1)
3.	3848-04 Handle Grip	(1)
4.	3590-02 1/4-20 x 1-1/2" Hex Bolt	(1)
5.	2278-05 1/4-20 Flange Locknut	(1)
6.	3853-07 Lock Pin Assembly	(1)
7.	4583-06 Yoke	(1)
8.	1428-03 3/4-10 x 2-1/4" Hex Bolt	(2)
9.	1850-06 3/4" Wide Flatwasher	(2)
10.	1374-04 Yoke Bushing	(2)
11.	1889-03 3/4-10 Hex Locknut	(2)
12.	4466-06 Cross Member	(1)
13.	4331-04 Pivot Pin	(1)
14.	3498-09 Safety Pin Assembly	(1)
15.	2953-03 1/2-13 x 4-1/2" Hex Bolt	(4)
16.	1888-03 1/2" Flatwasher	(4)
17.	1862-03 1/2-13 Hex Nut	(4)
18.	3853-07 Locking Pin Assembly	(4)
19.	1160-06 Upright Assembly	(2)
20.	1073-05 Scissors Clamp Assembly	(4)
21.	1880-03 1/2" Lockwasher	(4)



16,000 Maximum Trailer Weight
4,000 Vertical Load Weight

BEFORE BEGINNING INSTALLATION:

Be sure that the loaded trailer weight does not exceed 16,000 lbs. or the vertical load rating does not exceed 4,000 lbs.

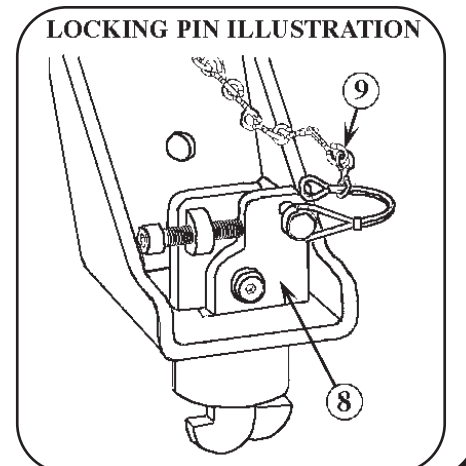
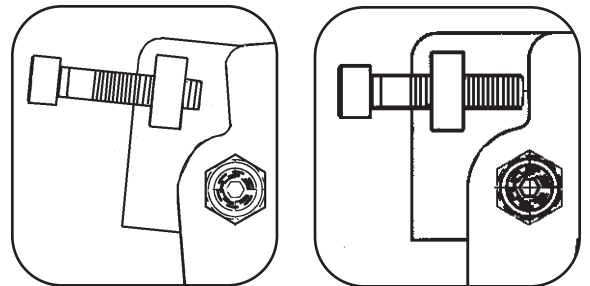
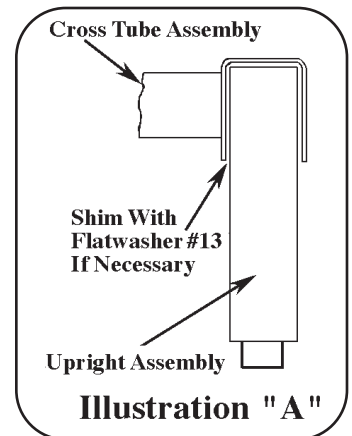
Be sure that the weight of the loaded trailer does not exceed the truck manufacturers trailer towing or payload capacities.

Use only a 2" king pin with this 5th wheel hitch.

The installed position of the 5th wheel hitch is critical relative to the distance from the cab so that the front of the trailer does not make contact with the cab when turning. On most applications, the distance from the back of the truck cab to the center of the trailer king pin should be 6" greater than 1/2 the width of the trailer.

INSTALLATION INSTRUCTIONS

1. Place the uprights into each of the previously installed under bed mounting sockets. Do not secure clamps at this time.
2. Determine the height of the head assembly. This height should be set so that there is 5"-6" minimum clearance between the bottom of the trailer overhang and the top of the truck box. More clearance may be needed if travel over uneven roads is expected. Bolt the cross member assembly #4 between the uprights at the correct height.
3. Check that each upright foot pad is centered over each of the four rectangular holes in under bed cross angle. It may be necessary to place a 1/2" flatwasher #13 between the upright and the U-bracket of the cross member to adjust the overall width so that the uprights stand up straight. See Illustration "A". Tighten all four attachment bolts to 75 ft. lbs. torque.
4. Place one unlatched scissor clamp into the rectangular hole in each upright foot pad. Push it down through both holes until it sets completely on the surface of the foot pad.
5. Each clamp should set straight up and down. If they tilt fore and aft, adjust the uprights slightly within the hole until clamps set up straight. To tighten each clamp, turn the allen screw in the clamp to spread the jaws. See "Latched" and "Unlatched" illustrations below. Snug all four clamps and then go back and tighten each clamp with the provided allen wrench.
6. When each clamp is tight insert the safety pin #9 into each clamp as shown in the Locking Pin illustration above. The locking pins **MUST** be installed through each clamp at all times when towing a trailer.
5. Place the head assembly into channel in cross member #4. Align hole in yoke with hole in cross member and secure with pivot pin #5 and safety pin #14. Check the height of the hitch head to be certain that there is the required 5" to 6" minimum clearance between the bottom of the trailer overhang and the top of the truck box. Make any adjustments as needed to obtain this clearance.
7. Attach the latch handle assembly #2 on the rod located on the left side of the hitch head assembly #1. Align holes in handle and rod. Bolt in place with 1/4" fasteners #9 and #10 as illustrated.



You are now ready to hook up your 5th wheel trailer.

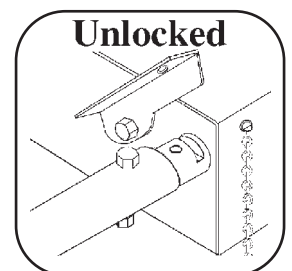
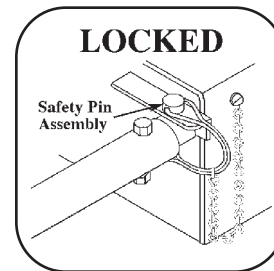
See the "Trailer Hook Up Instructions"
on the following pages.

TRAILER HOOK UP INSTRUCTIONS

FOLLOW THESE INSTRUCTIONS FOR EACH HOOK UP

1. Before connecting trailer to the hitch, the safety pin must be removed from the locking bracket and handle. Be sure that the handle has moved completely inward and the jaw is closed. If handle is out, jaw is open. To close, push the handle rearward and inward. The spring tension should pull the handle into the closed position.
2. Adjust the trailer height so that the king pin plate is approximately 1/2" below the 5th wheel plate on the hitch. The ramps leading into the king pin box will pick up the trailer as the truck backs under the trailer king pin.
3. Lower the tailgate on the truck. Be sure that the trailer wheels are properly blocked, front and rear.
4. Carefully back the truck under the trailer so that the 2" king pin will engage fully into the hitch head and actuate the lock jaw. The jaw will have pivoted around the king pin into the closed position.
- 4a. Look at the pointer located on the forward surface of the hitch head assembly. When it is exposed and visible, beyond the housing, the king pin is fully seated.

- 4b. Look at the jaw to be certain it is closed and that the handle is in as far as it will go. Pivot the locking bracket down into groove in handle. Insert the safety pin through holes in bracket, handle and tab below handle. Lock in place. See Illustrations. Failure to follow these procedures could result in the hitch coming open and dropping trailer.



5. Connect the wiring harness from the trailer to the truck. Be sure that all cables are routed in such a way that they can not become tangled with hitch assembly. Check trailer brakes and lights for correct operation. **DO NOT** raise the trailer jacks at this time.
6. With trailer jacks still down, apply trailer brakes alone and try to slowly pull forward with truck. This will double check that the king pin is locked into the 5th wheel assembly. The trailer brakes should keep the truck from moving forward if the hitch is locked correctly.
7. Raise the trailer jacks to their retracted storage position. Remove the blocks from the front and rear of the trailer wheels.
8. Check between the bottom of the trailer overhang and the top of the truck bed for adequate clearance.

TRAILER DISCONNECT INSTRUCTIONS

1. Block the front and rear of the trailer wheels. Disconnect the wiring harness from the truck.
2. Set the trailer jacks so that most, but not all, of the trailer load is off the hitch.
3. Remove the safety pin from the locking bracket and handle on the hitch head assembly. Pull the handle out and forward until it drops into the notch. This locks the jaw into the open position.
4. Drive the truck slowly forward and out from under the trailer.
5. Reset handle into the closed position.

SERVICE AND MAINTENANCE INSTRUCTIONS

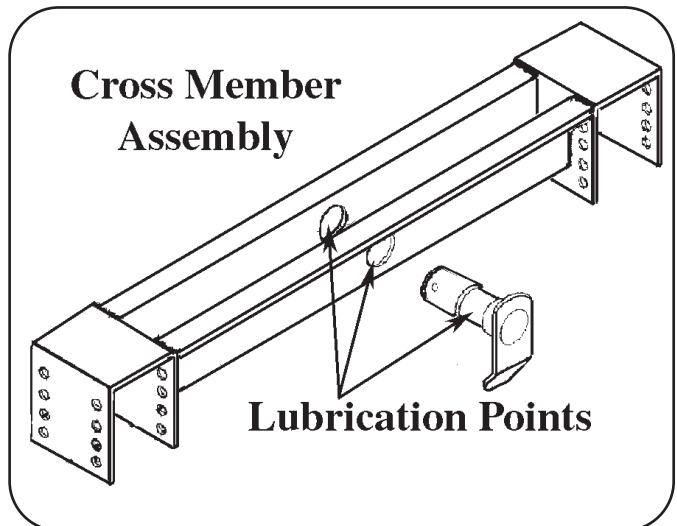
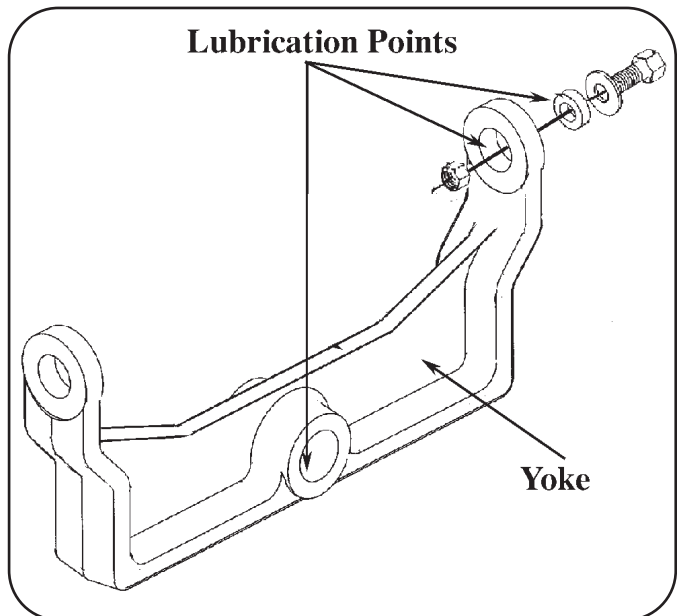
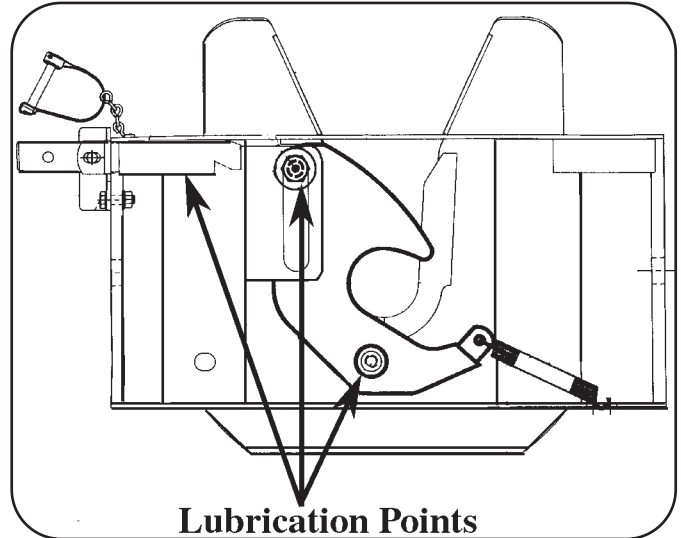
Lubricate all points on 5th wheel assembly as noted on illustrations below. Use heavy wheel bearing grease at all locations.

Keep internal jaw locking parts in head assembly well lubricated with a heavy wheel bearing grease for continued smooth operation.

The latch handle should be lubricated so that it will continue to move smoothly and easily.

Check for tightness of all assembly bolts. Re-tighten if necessary. Tighten 1/2-13 bolts to 75 ft. lbs. torque and 3/4-10 bolts to 260 ft. lbs. torque.

All remaining pivot points on hitch assembly should be lubricated with heavy wheel bearing grease to prevent excessive wear.



*Periodically check the moving parts inside the head assembly. If any one of them shows wear or damage, it should be replaced. Follow the illustrations below to replace parts in the head assembly.

REPLACEMENT PARTS LIST

Refer to Illustrations for locations of parts

Part	Description	Quantity
A.	3826-05 Latching Jaw Assembly	(1)
B.	1501-06 Short Extension Spring	(1)
C.	3829-03 Latch handle Assembly	(1)
D.	1835-03 1/2 x 1-1/4 Hex Bolt	(2)
E.	3491-02 1/2 Internal Lockwasher	(1)
F.	1846-09 1/2 Flatwasher	(1)
G.	3279-06 Slide Bracket Bushing	(1)
H.	3833-07 Indicator Cross Bar	(1)
I.	3482-08 Torsion Spring	(1)

Part	Description	Quantity
J.	4147-03 3/8 x 7/8 Hex Bolt	(1)
K.	2300-07 3/8 Conical Washer	(1)
L.	1828-03 1/2 Flange Locknut	(2)
M.	3626-03 1/2 x 1-1/4 Hex Bolt	(1)
N.	3853-07 Safety Pin Assembly	(1)
O.	3830-02 Lock Bracket	(1)
P.	1826-03 5/16 X 1 Hex Bolt	(1)
Q.	2282-02 5/16 Flange Locknut	(1)

